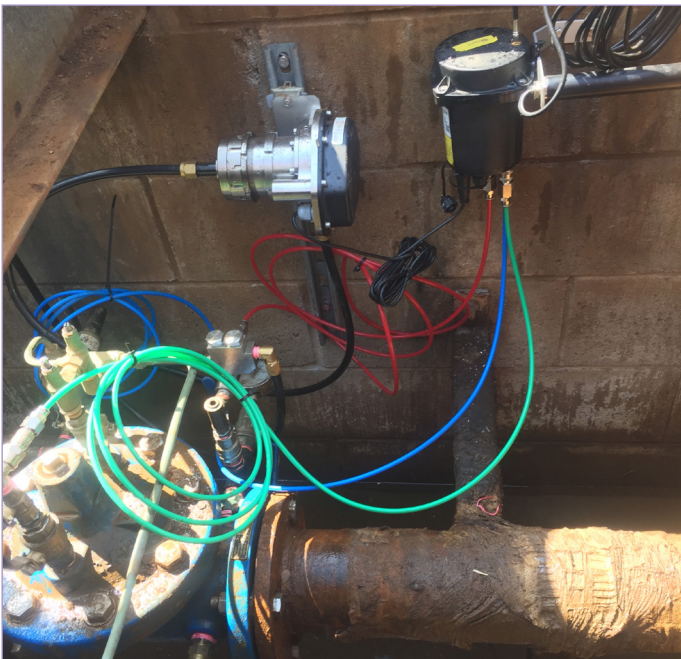
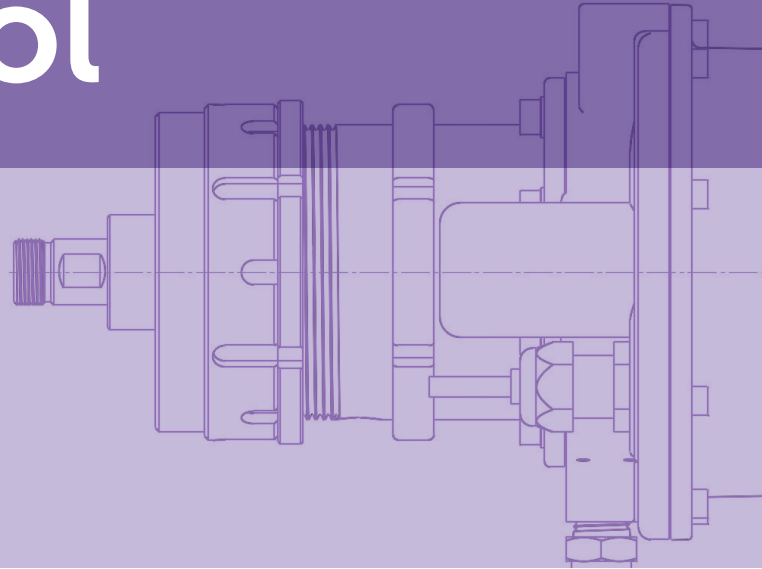


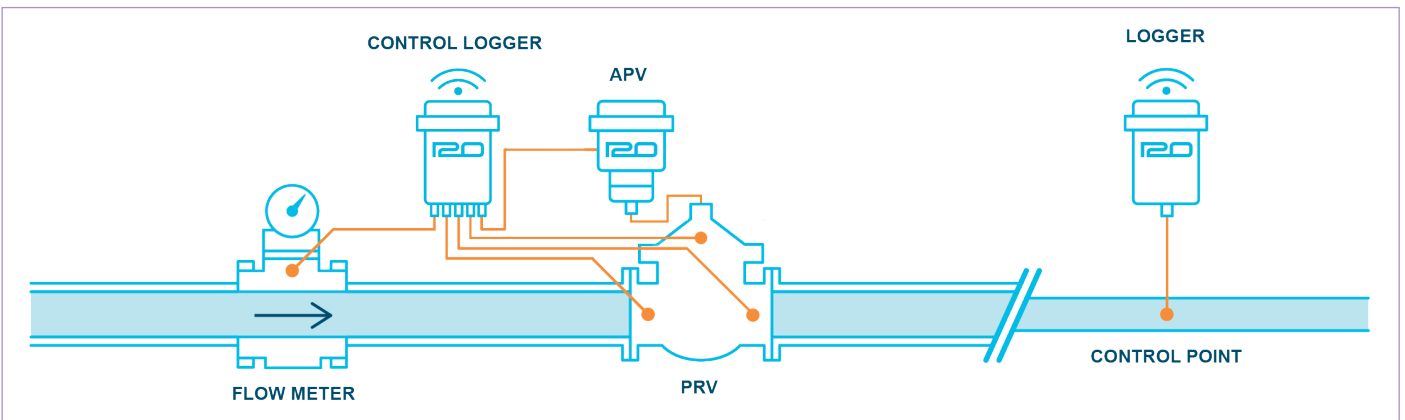
PRV Control

**PRECISE PRV
PRESSURE CONTROL
AND OPTIMISATION**



■ i20'S PRV CONTROL IS PART OF THE ONET SOLUTION. IT HAS 2 COMPONENTS: CONTROL LOGGER AND ADVANCED PILOT VALVE (APV). IT IS USED TO REMOTELY CONTROL PRESSURE, OR AUTOMATICALLY DELIVER TARGET PRESSURES AT A CRITICAL POINT. IT OPERATES ON ALL GLOBE TYPE DIAPHRAGM ACTUATED PRESSURE REDUCING VALVES (PRVS) GREATER THAN 50MM. THE BENEFITS ARE:

- Consistent delivery of target pressure for customers
- Reduction in leakage and bursts
- Reduction in operating costs
- Extended asset life for downstream networks
- Reduced energy costs from upstream pumping
- ROI varies depending on the network but is typically less than 24 months



CONTROL LOGGER



■ CONFIGURATION

DATA SAMPLING INTERVAL	≥ 1s (1 min default)
DATA LOGGING INTERVAL	≥ 1 min (15 min default)
DIAL UP INTERVAL	≥ 5 min (24 hr default)
TEMPERATURE/VOLTAGE	Logged (default = hourly)
GSM SIGNAL STRENGTH	Logged on GSM Connection

■ INTERFACES

DIGITAL FLOW INPUT

TYPE	Industry standard, digital 2-wire interface plus 3 and 5 wire bi-directional meters
MAX PULSE FREQUENCY	100Hz
MIN PULSE WIDTH	5ms
3 PRESSURE TRANSDUCERS	3 pressures for measuring upstream, downstream as well as PRV control space (optional).

PHYSICAL INTERFACES

CONFIGURATION PORT	USB connection to PC, Windows tablet or Android phone and tablet
EXPANSION PORT	Connection for external power sources 6V - 30V

OVER THE AIR (OTA) INTERFACE

NETWORK	Quad-band 2G and Penta-band 3G
SIM	Field replaceable Automatic configuration Supports roaming SIMs

■ PHYSICAL INFORMATION

SIZE (mm)	w115 x d115 x h115
WEIGHT (kg)	0.68

■ ENVIRONMENTAL PERFORMANCE

Designed and tested to IP68
Capable of withstanding extreme environmental conditions of up to 50°C

■ LOGGING MODES

STANDARD LOGGING

Mean of samples over logging interval

ENHANCED STATISTICS

Instability, pressure transients and surges can be identified from maximum, minimum and standard deviation pressure values captured during the logging interval

APV



■ CONFIGURATION

Linear pressure/position relationship
Absolute pressure adjustment
Pilot position indicator
Selection of mounting options
Position feedback to Control Logger
Self-bleed

■ INTERFACES

HYDRAULIC

Upstream, Downstream and Control Space connections 3/8" BSP(F)

ELECTRICAL

IP68 connector to i2O Controller

■ PHYSICAL INFORMATION

SIZE (mm)	w198 x d149 x h130
WEIGHT (kg)	5

■ ENVIRONMENTAL PERFORMANCE

IP68 continuously submersible to 4m
Operational temperature 1°C to 50°C
Stainless steel (316) construction
WRAS approved

PRV CONTROL HARDWARE

■ INSTALLATION

Installation of the PRV control hardware should be undertaken by a qualified i2O trained employee or an authorised i2O Service Partner. Standard technician tools are required along with an adjustable C-Spanner 2" to 4 3/4, 4" (100mm) Puller, 3mm hex tool, RTV Silicone 744, and the Configurator Software on a laptop or using the Mobile Configurator Android App on a mobile device.

19/12/2018

4 Benham Road, Southampton Science Park, Southampton, SO16 7QJ, United Kingdom
Phone: +44 (0)23 8011 1420 Email: info@i2owater.com