

# Gas Distribution Safety

## Transform gas distribution networks and ensure safety

### INTRODUCTION

In recent years, gas distribution companies have faced an escalating array of safety threats and regulations. If companies fail to adapt to this evolving landscape, it will present potentially dire consequences for both human safety and financial stability. These challenges can include:

**Aging Infrastructure:** As gas distribution pipelines age, they become more susceptible to corrosion, leaks and structural weaknesses.

**Natural Disasters:** Events such as earthquakes, hurricanes, floods and wildfires can damage gas distribution infrastructure, leading to leaks, ruptures and explosions.

**Third-Party Damage:** Excavation, construction and other third-party activities near gas distribution pipelines can accidentally damage infrastructure, leading to leaks or ruptures.

**Human Error:** Despite rigorous training and safety protocols, human error remains a leading cause of accidents in the gas distribution industry, whether through miscommunication, procedural lapses or negligence.

**Environmental Regulations:** Increasingly stringent environmental regulations require gas distribution companies to invest in emissions reduction technologies, leak detection systems and other compliance measures.

As these threats evolve and multiply, human safety and financial stability challenges make it imperative for gas distribution companies to stay vigilant and employ advanced safety measures to mitigate risks, protect assets and ensure the safety of both employees and the communities they service.

Itron's Gas Distribution Safety (GDS) solution provides state-of-the-art tools designed specifically for gas distribution lines. Combining intuitive management software with new advancements in smart metering, sensors, control devices and network communications, GDS continuously monitors your gas distribution network to detect potential hazards, leaks or anomalies along the pipeline allowing for immediate response and intervention; reducing the risk of accidents, minimizing downtime and safeguarding both people and property.

### Centralized Safety Event Management

Visualize and manage new alarms and functionality provided by Itron's Intelis® solid-state gas meter via an AMI network to detect:

**Flow and Pressure Anomaly Alerts:** Integrated flow and pressure measurement detects unusual flow or pressure conditions, automatically shutting off gas flow and sending an alarm

**Meter Removal:** Embedded air detection alerts of potential meter removal, sending an alarm to the utility operations center, therefore improving safety and theft detection

**Fire Danger:** Integrated thermal sensors detect extreme heat, shutting off gas flow and sending alarm to utility personnel of a potential safety threat.



High Temperature Detection



High Pressure Detection



High Flow Detection



Low Pressure Detection



Air-in-Pipe Detection



Gas Distribution Safety

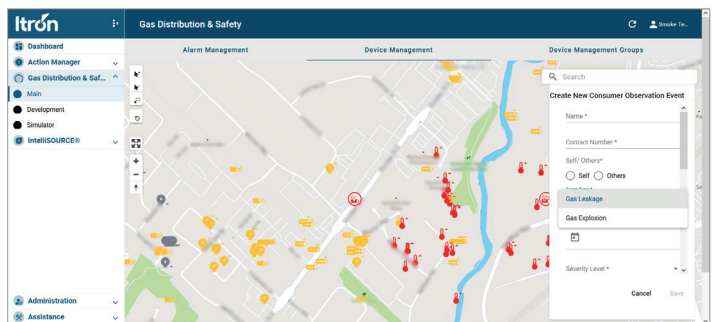
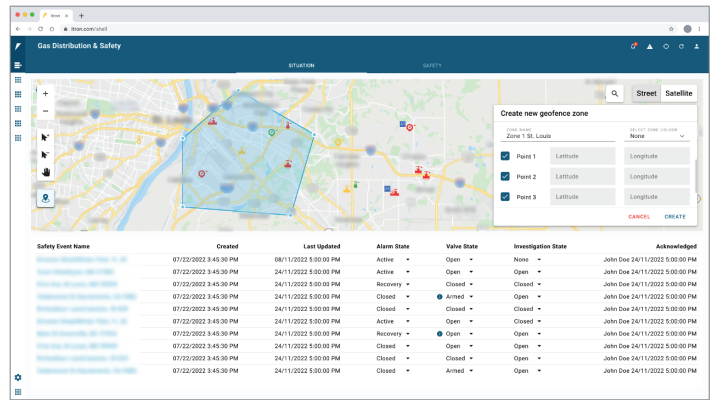
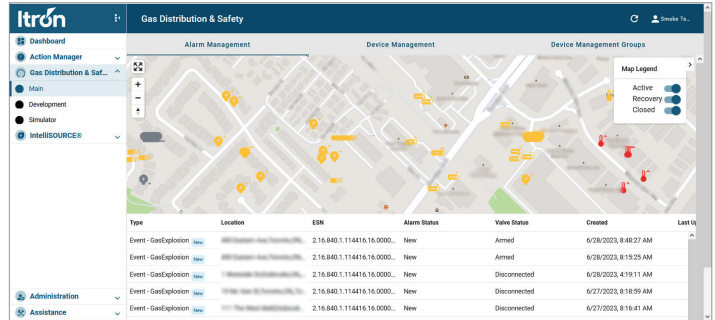
Empower your community to be a part of the solution by allowing consumer-reported events to be entered, either manually or through an integration interface, and managed within Gas Distribution Safety. Integrate safety events and alarms from other sensors, monitoring systems such as SCADA, and public sources such as severe weather and wildfire monitoring to create a centralized hub for maintaining real-time situational awareness of safety events throughout the gas distribution system.

### Remote Valve Control

Use Gas Distribution Safety's intuitive workspace for visualizing and managing the status of remotely controlled shut-off valves integrated within the Intelis solid-state gas meter, allowing back-office personnel to be notified and respond immediately to potential safety events in the distribution network before dispatching operators in the field for further investigation.

### ENSURE SAFETY & TRANSFORM OPERATIONS

By adopting Itron's Gas Distribution Safety solution, utilities gain access to a centralized monitoring hub that provides real-time situational awareness throughout the entirety of the distribution system and management tools for rapidly responding to safety events from the back-office to ensure the safety of their community and workforce; reducing the risk of accidents, minimizing downtime and safeguarding both people and property.



Gain operational visibility and track critical alarms and events through a workflow, enabling quick and efficient response times.



Address critical situations immediately through remote internal valve actuation in the meter.



Optimize and reduce response times for safety incidents and business processes for you and your customers.

To learn more visit [itron.com](http://itron.com)

While Itron strives to make the content of its marketing materials as timely and accurate as possible, Itron makes no claims, promises, or guarantees about the accuracy, completeness, or adequacy of, and expressly disclaims liability for errors and omissions in, such materials. No warranty of any kind, implied, expressed, or statutory, including but not limited to the warranties of non-infringement of third party rights, title, merchantability, and fitness for a particular purpose, is given with respect to the content of these marketing materials. © Copyright 2024 Itron. All rights reserved. 102058MP-01 9.24

We create a more resourceful world



2111 North Molter Road  
Liberty Lake, WA 99019 USA